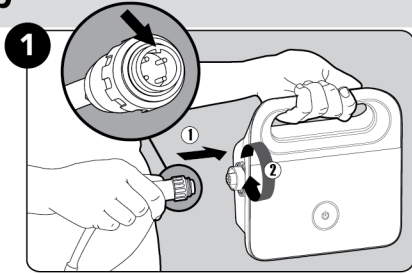
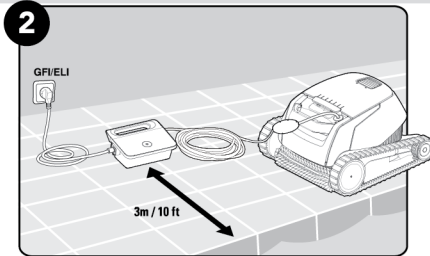


## Robot operation

### Set Up

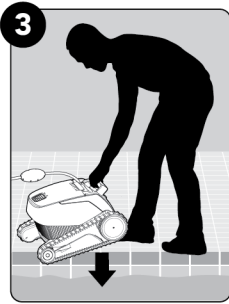


Attach the floating cable to the power supply.



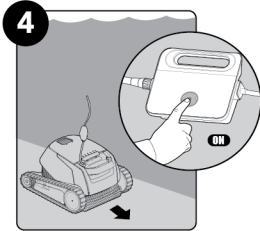
Position the power supply at least 3m/10ft away from the edge of the pool.

### Into the pool



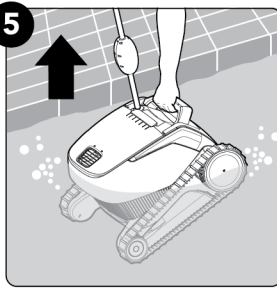
Put the Pool Cleaner into the pool. Release the Pool Cleaner and let it sink to the floor of the pool. Make sure that the floating cable is free of any obstructions.

### Operation



Turn the power supply ON. The Pool Cleaner will now operate until it has reached the end of the cleaning cycle.

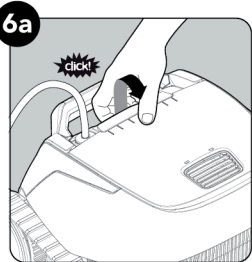
### Out of the pool



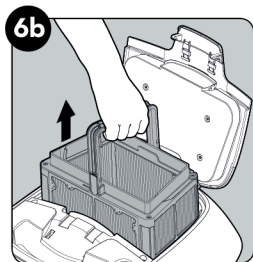
## 6 Cleaning the filter

It is highly recommended to clean the filter basket after each cleaning cycle.  
Note: Don't let the filter cartridges dry out before cleaning.

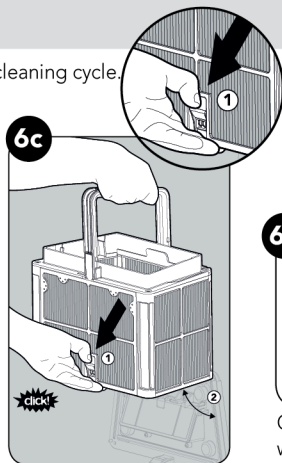
⚠ Unplug the power supply before servicing



Open the filter cover.

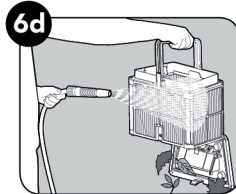


Lift up the basket.



6c

Open the latch to release the bottom lid in order to remove the debris.



6d

Clean the filter basket with a hose.

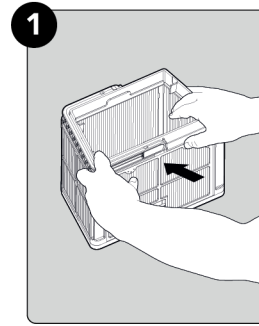
## 7 Storage

Coil the cable and store in a cool, dry place on the Caddy.  
Do NOT store the robot where it will be exposed to direct sunlight, excessive heat or to frost.

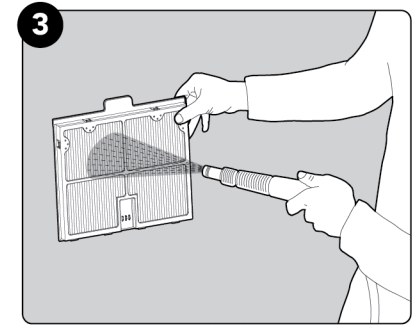
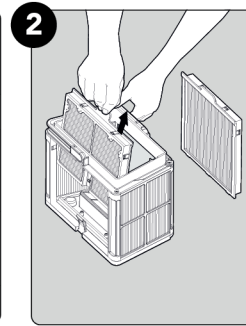
## Maintenance

### Periodic filter cleaning

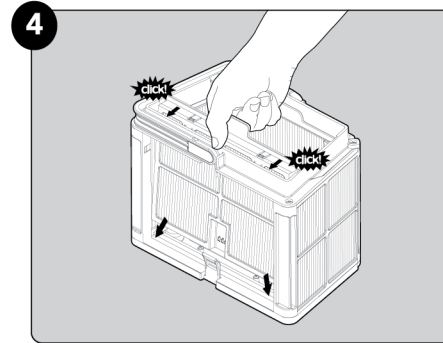
Dismantle the 2 ultra-fine filter panels of the outer basket according to the following steps:



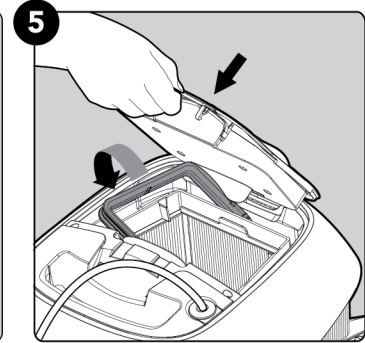
Dismantle the 2 panels using your thumbs.



Clean the filter panels with a hose.



Assemble the filter panels.



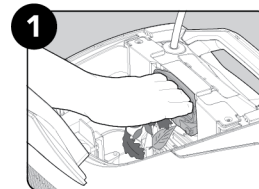
Insert the clean filter basket and close the filter cover.

### Cleaning the impeller

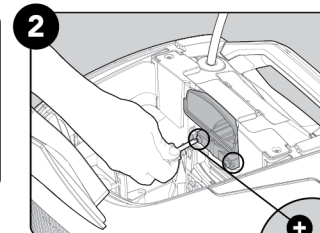
If you notice debris trapped in the impeller:

⚠ Unplug the power supply before servicing

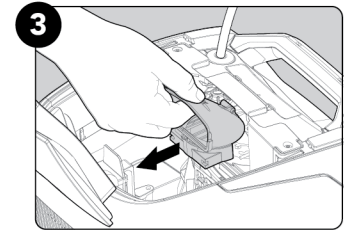
Clean the debris trapped in the impeller opening, according to the following steps:



If the debris is not reachable follow the next steps.



Using a short screwdriver open the 2 screws.



Pull the impeller cover backwards to release it. Clean the debris trapped around the impeller. Assemble the impeller cover.