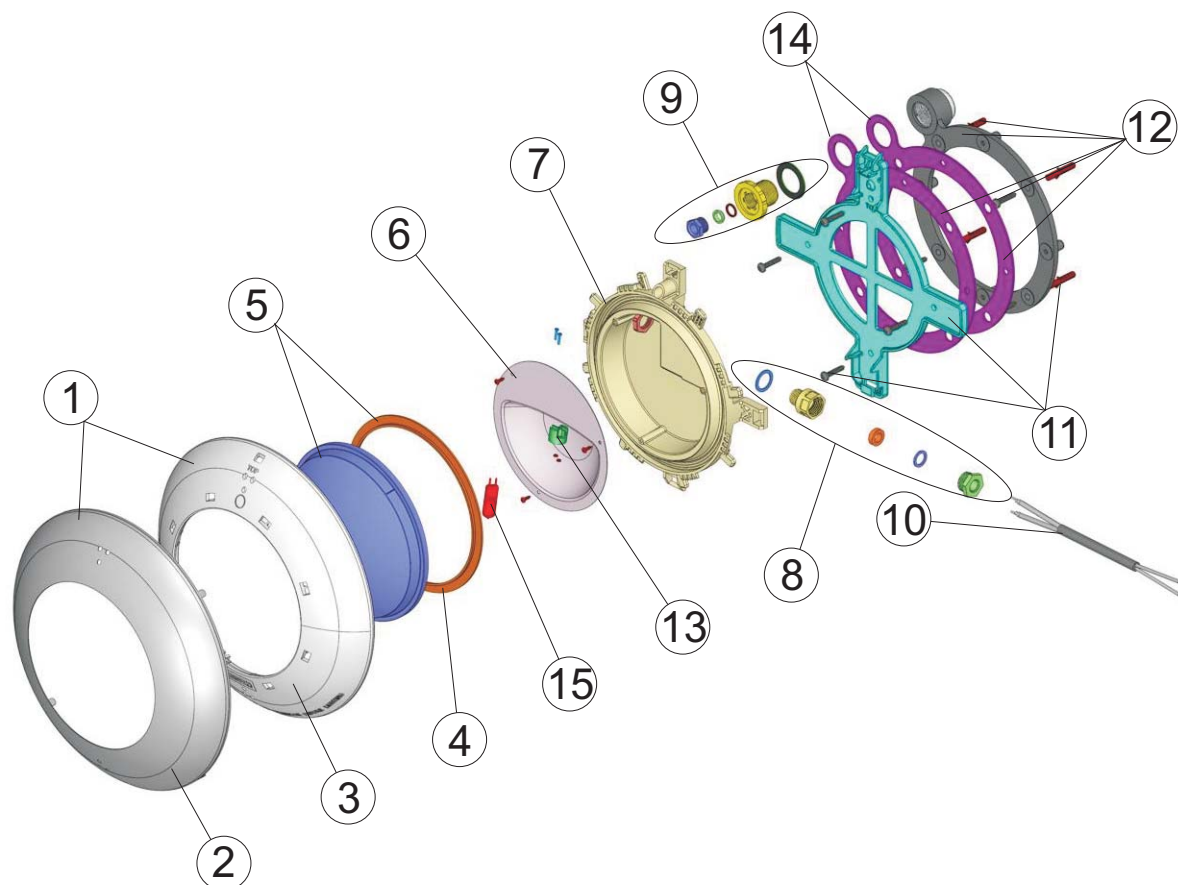


**CODIGO : 43452 43454**
**DESCRIPCION :PROY. EXTRA PLANO P. LINER HORM. EMB. BLANCO/INOX**


POS.	CODIGO	DENOMINACION	POS.	CODIGO	DENOMINACION
1	4403012301	CJTO. EMBELL. INOX PROYECTOR EXTRA PLANO	9	4403015702	CJTO. PRENSAESTOPAS
2	4403012304	EMBELECEDOR INOX PROYECTOR EXTRA PLANO	10	4403011905	CABLE PROYECTOR
3	4403011901	EMBELECEDOR PROYECTOR PLANO	11	4403011906	SOPORTE PROYECTOR
4	4403010102	JUNTA SILICONA PROYECTOR	12	4403015703	CJTO. FIJACION PROYECTOR EXTRA PLANO
5	4403012303	LENTE TRANSPARENTE MAS JUNTA	13	4403011407	PORTALAMPARAS
6	4403011903	REFLECTOR PORTALAMPARAS	14	4403015704	JUNTA ADHESIVA PROYECTOR PLANO
7	4403011908	CUERPO PROYECTOR	15	00371	LAMPARA HALOGENA 12 V. 100 W.
8	4403011904	PRENSAESTOPAS M-16			

## ENGLISH

POS.	CODE	DESCRIPTION	POS.	CODE	DESCRIPTION
1	4403012301	SET RUSTPROOF DECORATIVE RING	9	4403015702	GLAND SEAL ASSY.
2	4403012304	RUSTPROOF DECORATIVE RING	10	4403011905	LIGHT CABLE
3	4403011901	FLAT LIGHT FACEPLATE	11	4403011906	LIGHT SUPPORT
4	4403010102	LIGHT SILICON GASKET	12	4403015703	FIXING UNIT EXTRA FLAT PROJECTOR
5	4403012302	GLAND SEAL M-16 KT 19,5X2	13	4403011407	LAMP HOLDER
6	4403011903	LAMPHOLDER REFLECTOR PLATE	14	4403015704	ADHESIVE GASKET FLAT PROJECTOR
7	4403011908	LIGHT BODY	15	00371	LIGHTBULB
8	4403011904	NUT M-16			

## FRANÇAIS

POS.	CODE	DESCRIPTION	POS.	CODE	DESCRIPTION
1	4403012301	ENSEMBLE ANNEAU ENJOLIVER INOX	9	4403015702	ENS. PRESSE ETOUPE
2	4403012304	ANNEAU ENJOLIVER INOX	10	4403011905	CABLE DE PROJECTEUR
3	4403011901	ENJOLIVEUR PROJECTEUR PLAT	11	4403011906	SUPPORT PROJECTEUR
4	4403010102	JOINT SILICONE PROJECTEUR	12	4403015703	ENS. FIXATION PROJECTEUR EXTRA PLAT
5	4403012302	ENSEMBLE PRESSE ÉTOUPE M-16 KT 19,5X2	13	4403011407	PORTE-LAMPE
6	4403011903	REFLECTEUR PORTE LAMPE	14	4403015704	JOINT ADHESIF PROJECTEUR PLAT
7	4403011908	CORPS DU PROJECTEUR	15	00371	LAMPE
8	4403011904	PRESSE ETOUPE M16			

## ITALIANO

POS.	CODE	DESCRIPTION	POS.	CODE	DESCRIPTION
1	4403012301	KIT ANELLO ORNAMENTALE INOSSID.	9	4403015702	KIT PRESSACAVI
2	4403012304	ANELLO ORNAMENTALE INOSSID.	10	4403011905	CAVO FARO
3	4403011901	ANELLO FRONTALE FARO PIATTO	11	4403011906	SUPPORTO FARO
4	4403010102	GUARNIZIONE SILICONE FARO	12	4403015703	KIT FISSAGGIO FARO EXTRA PIATTO
5	4403012302	KIT PRESSACAVO M-16 KT 19,5X2	13	4403011407	PORTALAMPADE
6	4403011903	RIFLETTORE PORTALAMPADE	14	4403015704	GUARNIZIONE ADESIVA FARO PIATTO
7	4403011908	CORPO FARO	15	00371	LAMPADINA
8	4403011904	PRESSACAVI M16			

## DEUTSCH

POS.	CODE	DESCRIPTION	POS.	CODE	DESCRIPTION
1	4403012301	SET VERZIERUNGSRING ROSTFREI	9	4403015702	SET QUETSCHVERSCHRAUBUNG
2	4403012304	VERZIERUNGSRING ROSTFREI	10	4403011905	KABEL UWS
3	4403011901	BLENDE UWS "EXTRA FLACH"	11	4403011906	BEFESTIGUNGSSATZ UWS "EXTRA FLACH" BETON
4	4403010102	DICHTUNG SILIKON UWS FLACH	12	4403015703	FIXIERSET EXTRA FLACHER SCHEINWERFER
5	4403012302	SET QUETSCHDICHTUNG M-16 KT 19,5X2	13	4403011407	LAMPENFASSUNG
6	4403011903	LAMPENHALTERUNG + REFLEKTOR UWS "EXTRA FLACH"	14	4403015704	KLEBEDICHTUNG FLACHSCHEINWERFER
7	4403011908	LAMPENGEHÄUSE UWS "EXTRA FLACH"	15	00371	LAMPE
8	4403011904	PG 16 VERSCHRAUBUNG UWS "EXTRA FLACH"			

## PORTUGUÊS

POS.	CODE	DESCRIPTION	POS.	CODE	DESCRIPTION
1	4403012301	CJTO. ANEL DECORATIVO INOXIDABLE	9	4403015702	CONJ.CAIXA DE VEDAÇÃO
2	4403012304	ANEL DECORATIVO INOXIDABLE	10	4403011905	CABO PROJECTOR
3	4403011901	EMBELEZADOR PROJECTOR PLANO	11	4403011906	SUPORTE PROJECTOR
4	4403010102	JUNTA SILICONE PROTECTOR	12	4403015703	CONJ.FIXAÇÃO PROJECTOR EXTRA PLANO
5	4403012302	CONJUNTO BUCIM M-16 KT 19,5X2	13	4403011407	PORTA-LÂMPADA
6	4403011903	REFLECTOR PORTA-LÂMPADAS	14	4403015704	JUNTA ADESIVA PROJECTOR EXTRA PLANO
7	4403011908	CORPO PROJECTOR	15	00371	BOMBILHA
8	4403011904	BUCIN M-16			