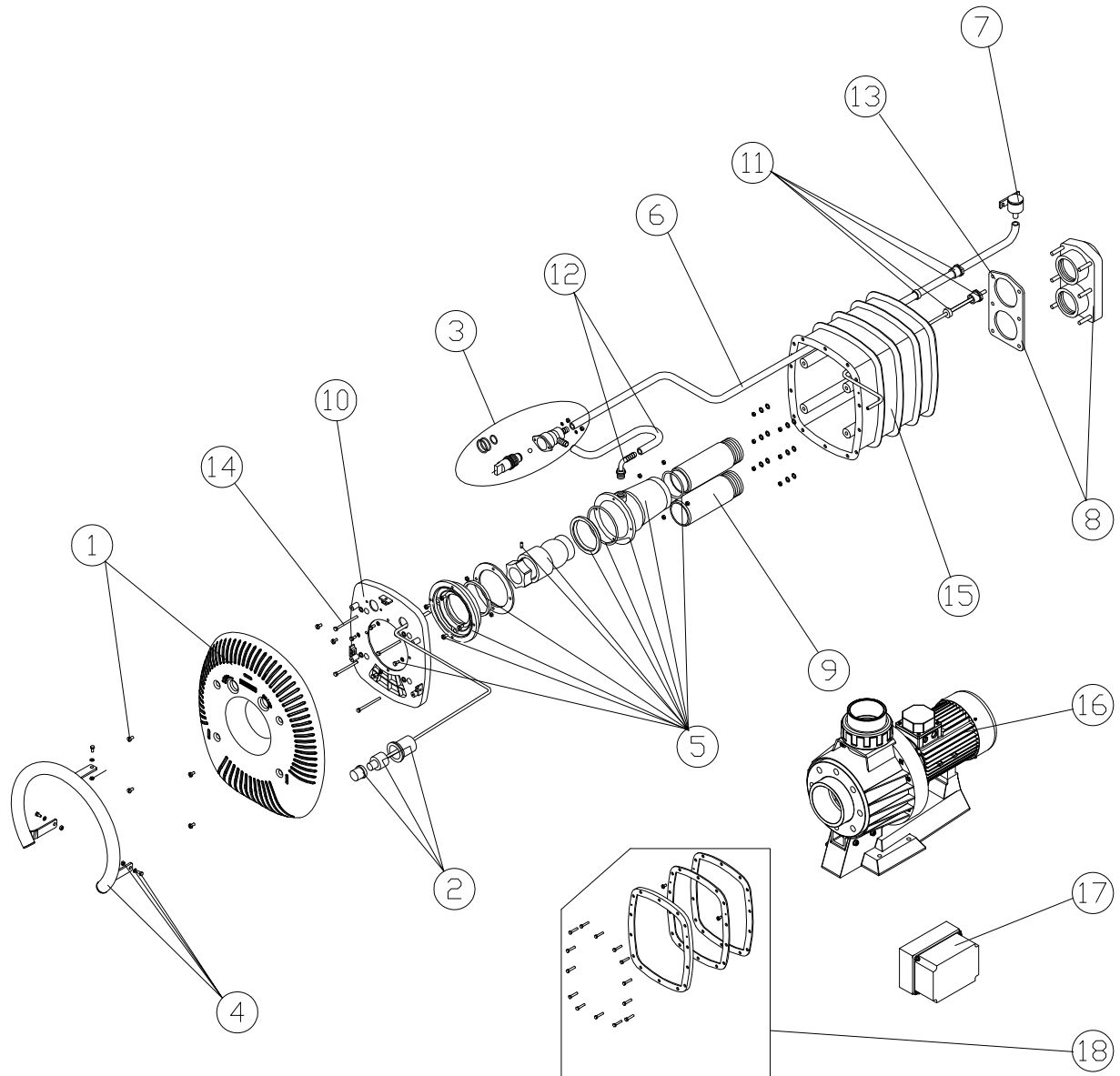


CODIGO : 35375 35376 35377 37214
DESCRIPCION : EQUIPO NATACION CONTRACORRIENTE



Pos.	CODIGO	DENOMINACION	Pos.	CODIGO	DENOMINACION
1	4402050601	CARATULA ECC. ECO.	12	4402050121	CONDUCTO ASPIRACION VENTURI
2	4402050602	CJTO. PULSADOR	13	4402050108	JUNTA TAPA E.C.C.
3	4402050603	VALVULA REGULACION	14	4402050134	TORNILLERIA PLACA FIJACION PLAST.
4	4402050604	AGARRADERA	15	11502R0100	CAJA ALOJAMIENTO
5	4402050605	CJTO. ALOJAMIENTO	16	28568	BOMBA 3 HP II
6	4402050122	CONDUCTO ASPIRACION E.C.C.	16	30774	BOMBA 3 HP III
7	4402050109	VALVULA ASPIRACION AIRE	16	11509	BOMBA 4,5 III
8	4402050107	BRIDA CONEXIÓN CON JUNTA	17	25456	ARMARIO ELECTRICO 3 HP II
9	4402050118	TUBO ASPIRACION / IMPULSION	17	32151	ARMARIO ELECTRICO 3 HP III
10	4402050126	PLACA FIJACION PLASTICO	17	11510	ARMARIO ELECTRICO 4,5 HP II
11	4402050110	PRENSAESTOPAS E.C.C.	18	11503	ACCES. MONTAJE LINER

ENGLISH

POS.	CODE	DESCRIPTION	POS.	CODE	DESCRIPTION
1	4402050601	COVER ECC. ECO	12	4402050121	VENTURI SUCTION CONDUIT
2	4402050602	COMPLETE SWITCH	13	4402050108	CCU GASKET COVER
3	4402050603	CUU REGULATOR VALVE	14	4402050134	PLASTIC FIXING PLATE SCREWS
4	4402050604	GRABRAIL	15	11502R0100	HOUSING CASC
5	4402050605	CUU COMPLETE INLET	16	28568	PUMP 3 HP II
6	4402050122	CUU REGULATOR VALVE	16	30774	PUMP 3 HP III
7	4402050109	AIR SUCTION VALVE	16	11509	PUMP 4,5 HP III
8	4402050107	FLANGE CONNECTION WITH GASKET	17	25456	ELECTRIC BOX 3 HP II
9	4402050118	SUCTION / RETURN TUBE	17	32151	ELECTRIC BOX 3 HP III
10	4402050126	PLASTIC FIXING PLATE	17	11510	ELECTRIC BOX 4,5 HP III
11	4402050110	CCU CABLE GLAND	18	11503	LINER ASSY. ACCESORY

FRANÇAIS

POS.	CODE	DESCRIPTION	POS.	CODE	DESCRIPTION
1	4402050601	COUVERCLE ECC. ECO.	12	4402050121	TUYAU D'ASPIRATION ET VENTURI
2	4402050602	BOUTON POUSSOIR	13	4402050108	JOINT DE CONNEXION
3	4402050603	BOUTON DE REGLAGE D'AIR	14	4402050134	VIS DE FIXATION
4	4402050604	MAIN COURANTE	15	11502R0100	BLOC D'ENCASTREMENT
5	4402050605	ENSEMBLE REFOULEMENT	16	28568	POMPES 3 HP II
6	4402050122	TUYAU D'ASPIRATION	16	30774	POMPES 3 HP III
7	4402050109	VALVE ASPIRATION D'AIR	16	11509	POMPES 4,5 HP III
8	4402050107	BRIDE DE CONNEXION AVEC JOINT	17	25456	COFFRETS DE COMANDE 3 HP II
9	4402050118	MANCHETTE ASPIRATION / REFOULEMENT	17	32151	COFFRETS DE COMANDE 3 HP III
10	4402050126	PLAQUE DE FIXATION ABS	17	11510	COFFRETS DE COMANDE 4,5 HP III
11	4402050110	PRESSE ETOUPE	18	11503	KIT POR MONTAGE PISCINES LINER ET POLYESTER

ITALIANO

POS.	CODE	DESCRIPTION	POS.	CODE	DESCRIPTION
1	4402050601	COPERCHIO ECC. ECO.	12	4402050121	CONDOTTO DI ASPIRAZIONE VENTURI
2	4402050602	PULSANTE COMPLETO	13	4402050108	GUANIZIONE PER COPERCHIO N.C.C.
3	4402050603	VALVOLA DI REGOLAZIONE N.C.C.	14	4402050134	BULLONERIA PER PIASTRA DI FISSAGGIO IN PLASTICA
4	4402050604	CORRIMANO	15	11502R0100	CUSTODIA ALLOGGIAMENTO
5	4402050605	BOCCHETTA COMPLETA N.C.C.	16	28568	POMPE 3 HP II
6	4402050122	CONDOTTO DI ASPIRAZIONE N.C.C.	16	30774	POMPE 3 HP III
7	4402050109	VALVOLA DI ASPIRAZIONE ARIA	16	11509	POMPE 4,5 HP III
8	4402050107	FLANGIA FISSAGGIO CON GUARNIZIONE	17	25456	QUADRI ELETTRICI 3 HP II
9	4402050118	TUBO DI ASPIRAZIONE / MANDATA	17	32151	QUADRI ELETTRICI 3 HP III
10	4402050126	PIASTRA DI FISSAGGIO IN PLASTICA	17	11510	QUADRI ELETTRICI 4,5 HP III
11	4402050110	PRESSACAVO N.C.C.	18	11503	KIT DI MONTAGGIO PER PISCINE LINER E POLIESTERE

DEUTSCH

POS.	CODE	DESCRIPTION	POS.	CODE	DESCRIPTION
1	4402050601	ABDECKUNG ECC. ECO.	12	4402050121	LUFTSCHLAUCH GSA KURZ
2	4402050602	PNEUMATIKTASTER GSA KOMPLETT	13	4402050108	DICHTUNG ANSCHLUSSFLANSCH GSA
3	4402050603	LUFTREGLER GSA KOMPLETT	14	4402050134	SCHRAUBENSATZ BEFESTIGUNGSPLATTE GSA
4	4402050604	HALTEGRIF	15	11502R0100	GEHÄNSE
5	4402050605	DÜSE GSA KOMPLETT	16	28568	PUMPEN 3 HP II
6	4402050122	LUFTSCHLAUCH GSA LANG	16	30774	PUMPEN 3 HP III
7	4402050109	LUFTANSAUGVENTIL	16	11509	PUMPEN 4,5 HP III
8	4402050107	ANSCHLUSSFLANSCH MIT DICHTUNG	17	25456	PN SCHALTKASTEN 3 HP II
9	4402050118	SAUG-/ DRUCKROHR GSA	17	32151	PN SCHALTKASTEN 3 HP III
10	4402050126	BEFESTIGUNGSPLATTE AUS KUNSTSTOFF	17	11510	PN SCHALTKASTEN 4,5 HP III
11	4402050110	PG-VERSCHRAUBUNGSSATZ GSA	18	11503	FLANSCHSATZ

PORTUGUÊS

POS.	CODE	DESCRIPTION	POS.	CODE	DESCRIPTION
1	4402050601	COBERTA ECC. ECO.	12	4402050121	TUBO ASPIRAÇÃO VENTURI
2	4402050602	PURSATIL COMPLETO	13	4402050108	JUNTA TAMPA E.C.C.
3	4402050603	VALVULA REGULAÇÃO E.C.C.	14	4402050134	PARAFUSOS PLACA FIXAÇÃO
4	4402050604	AGARRADEIRA	15	11502R0100	CAIXA DE ALOJAMENTO
5	4402050605	BOCA COMPLETA E.C.C.	16	28568	BOMBA 3 HP II
6	4402050122	TUBO ASPIRAÇÃO E.C.C.	16	30774	BOMBA 3 HP III
7	4402050109	VÁLVULA ASPIRAÇÃO AR	16	11509	BOMBA 4,5 HP III
8	4402050107	FLANGE LIGAÇÃO COM JUNTA	17	25456	QUADROS DE COMASNDOS 3 HP II
9	4402050118	TUBO ASPIRAÇÃO / IMPULSAO	17	32151	QUADROS DE COMASNDOS 3 HP III
10	4402050126	PLACA FIXAÇÃO PLÁSTICO	17	11510	QUADROS DE COMASNDOS 4,5 HP III
11	4402050110	BUCIN	18	11503	KIT MONTAGEM DE PISCINAS LINER E POLIESTER