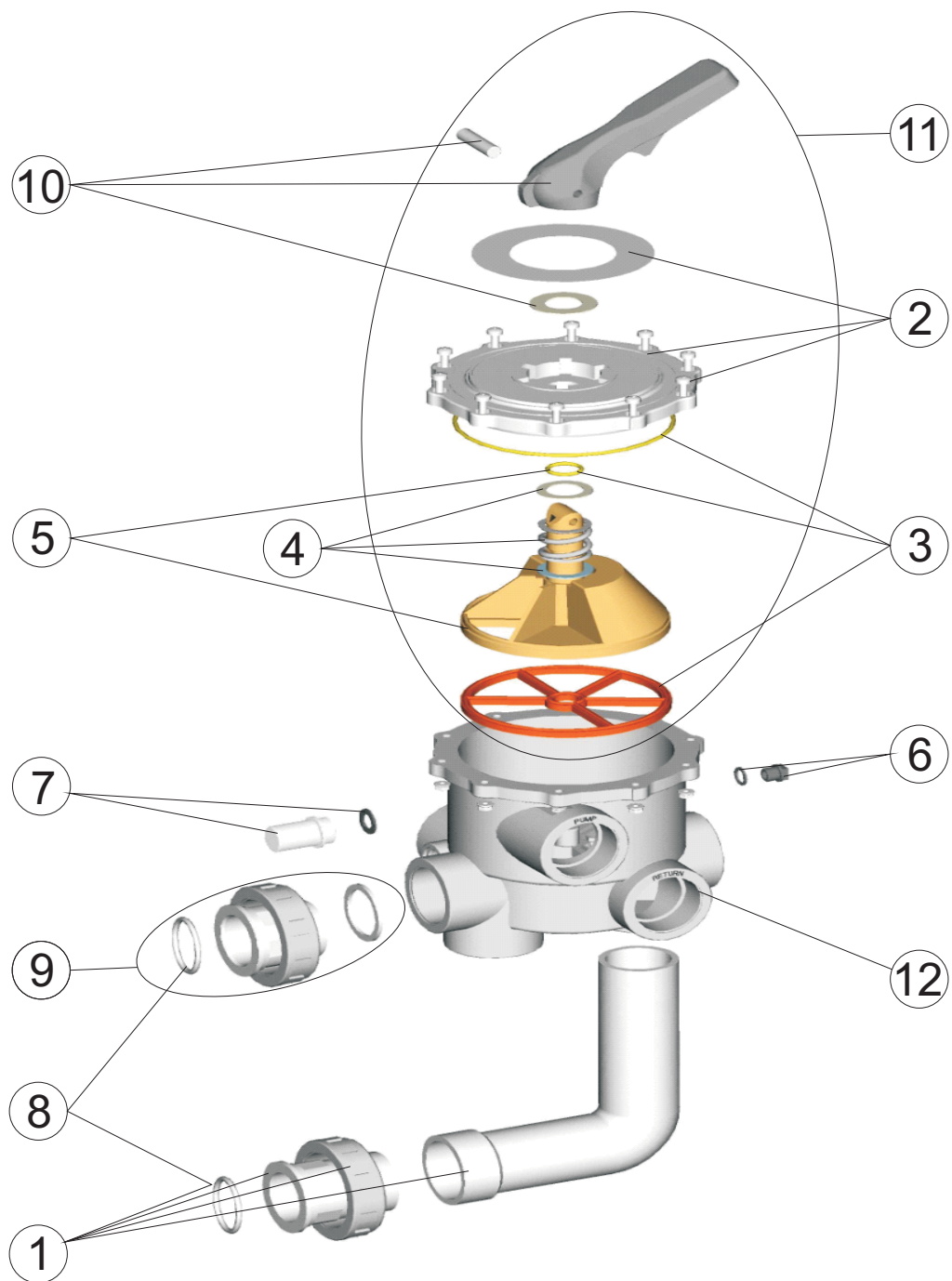


CODIGO : 15389

DESCRIPCION : VALVULA SELECTORA 2" CLARITY



POS.	CODIGO	DENOMINACION	POS.	CODIGO	DENOMINACION
1	4404122901	ENLACE ACODADO 2"	7	4404120108	VISOR CON JUNTA
2	4404120403	TAPA CON CARATULA NEGRA 2"	8	4404301901	JUNTA TORICA RACCOR SALIDA
3	4404120407	JUNTAS VALVULA 2"	9	4404120502	ENLACE RECTO NEGRO 2"
4	4404120105	RESORTE CON ARANDELAS	10	4404120402	MANETA NEGRA VALVULA 2"
5	4404120406	DISTRIBUIDOR CON JUNTAS 2"	11	4404120410	TAPA DISTRIBUIDOR NEGRA 2"
6	4404121107	TAPON 1/4" VALVULA	12	15389R0100	CJTO. CUERPO 2"

ENGLISH

POS.	CODE	DESCRIPTION	POS.	CODE	DESCRIPTION
1	4404122901	ELBOW 22"	7	4404120108	VISOR WITH SEAL
2	4404120403	BLACK TOP 2"	8	4404301901	O RING D.56,3X5.3 EPDM65
3	4404120407	GASKETS 2"	9	4404120502	UNION BLACK 2" NEW
4	4404120105	SPRING WITH WASHERS	10	4404120402	BLACK HANDLE 2"
5	4404120406	DISTRIBUTOR WITH GASKETS 2" NEW	11	4404120410	TOP ASSEMBLY BLACK 2" NEW
6	4404121107	PLUG 1/4"	12	15389R0100	BLACK SELECTOR VALVE 2"

FRANÇAIS

POS.	CODE	DESCRIPTION	POS.	CODE	DESCRIPTION
1	4404122901	SORTIE COUDEE 2"	7	4404120108	VOYANT ET JOINT
2	4404120403	COUVERCLE NOIR 2" ET VIS	8	4404301901	JOINT TORIQUE RACCORD SORTIE D.56,3X5.3 EPDM 65
3	4404120407	JOINTS DE VANNE 2"	9	4404120502	SORTIE DROITE NOIRE 2" NOUVEAU MODELE
4	4404120105	RESSORT ET RONDELLES	10	4404120402	POIGNEE NOIRE 2"
5	4404120406	BOISSEAU AVEC JOINTS 2"	11	4404120410	COUVERCLE NOIR ET BOISSEAU 2" NOUVEAU MODELE
6	4404121107	BOUCHON 1/4" DE VANNE	12	15389R0100	BLACK SELECTOR VALVE 2"

ITALIANO

POS.	CODE	DESCRIPTION	POS.	CODE	DESCRIPTION
1	4404122901	RACCORDO A GOMITO 2"	7	4404120108	VISORE CON GUARNIZIONE
2	4404120403	COPERCHIO CON MASCHERA NERA 2"	8	4404301901	O-RING RACCORDO USCITA D.56,3X5.3 EPDM 65
3	4404120407	CONJUNTO SUPERIOR 2" PRETO	9	4404120502	GUARNIZIONE PER RACCORDO 2" NERO
4	4404120105	MOLLA CON RONDELLA	10	4404120402	MANIGLIA NERA PER VALVOLA 2"
5	4404120406	DISTRIBUTORE CON GUARNIZIONI 2" NUOVO	11	4404120410	COPERCHIO DI DISTRIBUZIONE NERO 2" NUOVO
6	4404121107	COPERCHIO 1/4" VALVOLA	12	15389R0100	CORPO 2" POS.3 NERO

DEUTSCH

POS.	CODE	DESCRIPTION	POS.	CODE	DESCRIPTION
1	4404122901	REINWASSERARM RSV 2"	7	4404120108	SICHTGLAS MIT DICHTUNG
2	4404120403	DECKEL RSV 2" SCHWARZ MIT SCHRAUBEN	8	4404301901	O-RING D.56.3X5.3 EPDM 65
3	4404120407	DICHTUNGSSATZ RSV 2"	9	4404120502	ROHWASSERANSCHLUSSSATZ RSV 2" SCHWARZ NEU
4	4404120105	FEDER MIT SCHEIBEN RSV	10	4404120402	HEBEL KOMPLETT RSV 2" SCHWARZ
5	4404120406	DREHTELLERSATZ RSV 2" NEU	11	4404120410	OBERTEIL RSV 2" SCHWARZ NEU
6	4404121107	ENTLEERUNGSSTOPFENSATZ 1/4" RSV 6+1	12	15389R0100	KÖRPER 2" POS. 3

PORTUGUÊS

POS.	CODE	DESCRIPTION	POS.	CODE	DESCRIPTION
1	4404122901	LIGAÇÃO CURVA 2"	7	4404120108	VISOR COM JUNTA
2	4404120403	TAMPA DA VÁLVULA PRETA 2"	8	4404301901	JUNTA TÓRICA D.56.3X5.3 EPDM 65
3	4404120407	JUNTAS VÁLVULA 2"	9	4404120502	LIGAÇÃO RECTA PRETA 2" NOVA
4	4404120105	MOLA COM ANILHAS	10	4404120402	MANIPULO PRETO VÁLVULA 2"
5	4404120406	DISTRIBUIDOR COM JUNTAS 2" NOVO	11	4404120410	TAMPA DISTRIBUIDORA PRETA 2" NOVA
6	4404121107	TAMPÃO 1/4" VÁLVULA	12	15389R0100	CORPO 2" POSIÇÃO 3 NEGRO