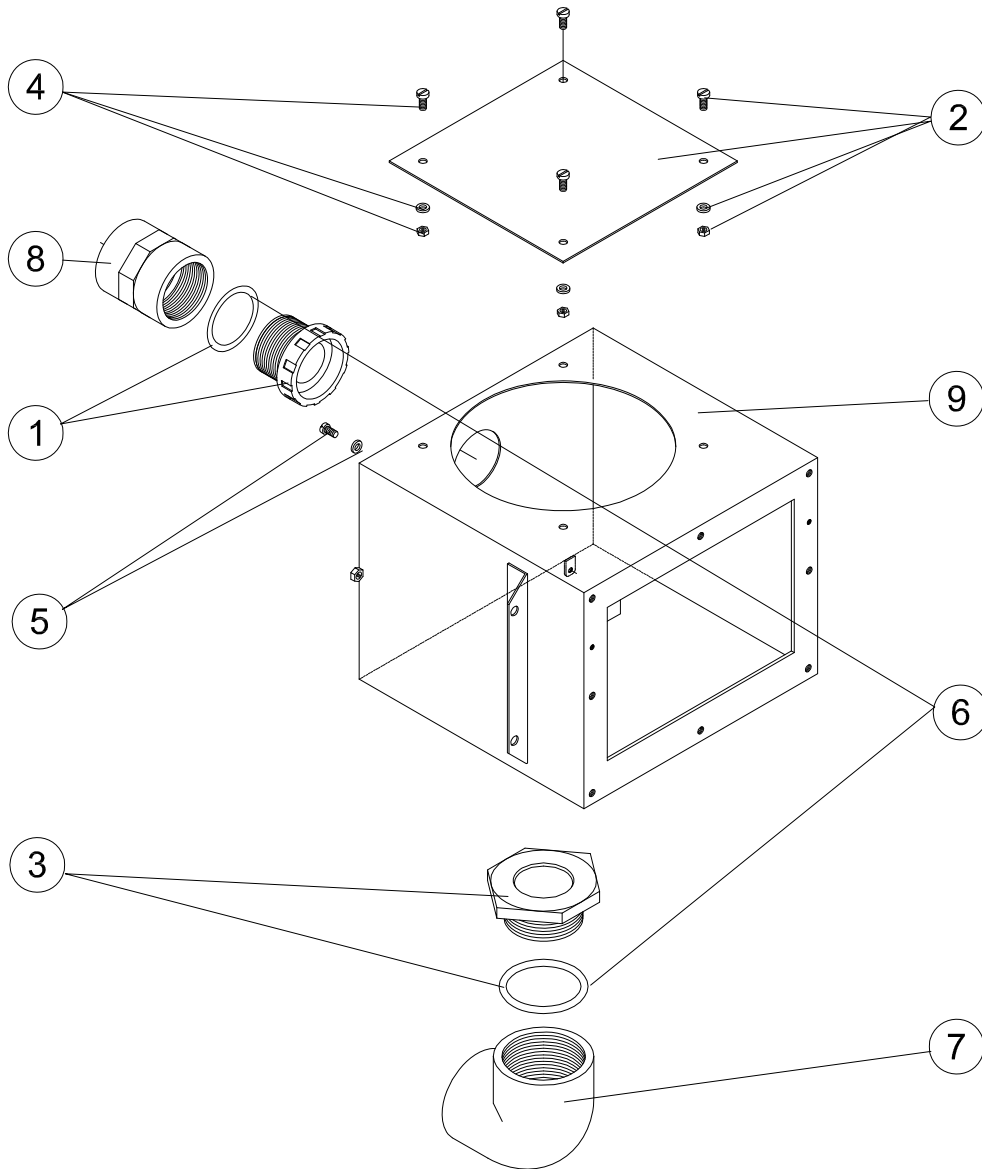


**CODIGO : 07610**  
**DESCRIPCION : SKIMMER A-202**



Pos.	CODIGO	DENOMINACION	Pos.	CODIGO	DENOMINACION
1	4402013901	REBOSADERO	6	4402013205	CJTO JUNTAS
2	4402013201	TAPA SKIMMER INOX	7	01733	CODO MIXTO D. 63 - 2"
3	4402013203	TERMINAL ROSCA EXTERIOR 2"	8	01893	MANGUITO UNION MIXTO D. 50 - 1 1/2"
4	4402013204	TORNILLOS Y TUERCAS DIN 85 M5X8	9	07610R0100	CUERPO SKIMMER
5	4401090402	TOMA DE TIERRA			

**ENGLISH**

POS.	CODE	DESCRIPTION	POS.	CODE	DESCRIPTION
1	4402013901	S. S. SKIMMER OVERFLOW A-202	6	4402013205	GASKET ASSEMBLY
2	4402013201	SKIMMER COVER WITH SCREWS	7	01733	ELBOW D. 63 - 2"
3	4402013203	NIPPLE	8	01893	ADAPTADOR SOCKET D50 X 1 1/2"
4	4402013204	SCREWS AND NUTS DIN-85 M5x8	9	07610R0100	SKIMMER BODY A-202
5	4401090402	EARTH CONNECTION			

**FRANÇAIS**

POS.	CODE	DESCRIPTION	POS.	CODE	DESCRIPTION
1	4402013901	TROP PLEIN SKIMMER INOX A-202	6	4402013205	ENSEMBLE JOINTS
2	4402013201	COUVERCLE DE SKIMMER INOX	7	01733	COUDE MIXTE D. 63 - 2"
3	4402013203	ECROU AVEC PAS DE VIS EXTERIEUR 2"	8	01893	MANCHON PVC MIX D.50X1 1/2"
4	4402013204	VIS ET RONDELLES	9	07610R0100	CORPS SKIMMER A-202
5	4401090402	PRISE DE TERRE			

**ITALIANO**

POS.	CODE	DESCRIPTION	POS.	CODE	DESCRIPTION
1	4402013901	TROPPO PIENO SKIMMER INOX A-202	6	4402013205	GRUPPO GUARNIZIONI
2	4402013201	COPERCHIO SKIMMER INOX	7	01733	GOMITO MISTO D.63-2"
3	4402013203	TERMINALE FILETTO ESTERNO	8	01893	MANICOTTO MISTO INCOLLAGGIO E FILETTO FEMMINA 50 X 1 1/2"
4	4402013204	VITI E GHIERA DIN-85 M5X8	9	07610R0100	CORPO SKIMMER A-202
5	4401090402	PRESA A TERRA			

**DEUTSCH**

POS.	CODE	DESCRIPTION	POS.	CODE	DESCRIPTION
1	4402013901	ÜBERLAUF ES-SKIMMER A-202	6	4402013205	DICHTUNGSSATZ
2	4402013201	SKIMMERDECKEL A203	7	01733	WINKEL D.63-2"
3	4402013203	NIPPEL AUSSENGEW. 2"	8	01893	PVC UE-MUFFE D50 X 1 1/2" INNENGEWINDE
4	4402013204	SCHRAUBEN UND MUTTERN DIN-85 M5X8	9	07610R0100	SKIMMERKÖRPER A-202
5	4401090402	ERDUNG			

**PORTUGUÊS**

POS.	CODE	DESCRIPTION	POS.	CODE	DESCRIPTION
1	4402013901	CALEIRA SKIMMER INOX A-202	6	4402013205	CONJUNTO JUNTAS
2	4402013201	TAMPA SKIMMER INOX	7	01733	JOELHO MISTO D. 63 - 2"
3	4402013203	TERMINAL ROSCA EXTERIOR 2"	8	01893	UNIAO TRANSIÇÃO FEMEA D 50X1 1/2"
4	4402013204	PARAFUSOS E PORCAS DIN-85 M5X8	9	07610R0100	CORPO SKIMMER A-202
5	4401090402	LIGAÇÃO A TERRA			